

Learn with Gabriela in
Orihue



1. Where do monks live? Spanish
2. Shrine of the patron
3. Church of the patron saint of Spain
4. All resting place. Spanish
5. Monastery between the river and the town hall

					7	O								
2						R								
		3				I								
					4	O								
					5	L								



Orihuela's persons,
places and things

Alphabet

A _ m _ r _ l

d _ a B l e _ _

C _ a r _ s _ s

D _ m i r _ _

_ E k _ s _

F l _ _ _ ñ e _

G r _ _ _ j _

H _ _ _ _ _ z

punta _ _ _ ñ a

J _ s t _

Kikiriki

g L _ _

M _ _ _ _ l

m _ N _ _ t _ _ _ °

r u _ s _ Ñ _ r

o _ _ _ l

P _ l _ e i _

m _ _ Q _ é _

P ° _ f _ _ a

S _ b _ d _ _ i _

s _ ñ T i _ _ °

U _ _ v _ r _ _ d _ d

V _ t ° _

War

e X _ _ r _ _ ó ñ

ñiño Y _ _ _ _ °

v _ z



O
R
I
H
U
E
L
A

Make your own experiment. Write
a verse beginning with each letter

Looking for the
cathedral's name



Theare birds that live

CRUZNC XKUVCM
EHACBR JUWUAF
YYFIFSRLBPMC
TNCLEMHCBAPL
RYSBGWDXOLAD
KRGRNVLXRANX
YASEGURAI CAW
TUDEMIRTHIRL
URHMUELAUOIQ
CASINOMVEFOP
CATEDRALLMOW
LIOSEMINARIO

Orihuela
Seguna
Palacio
Catedral
Casino
Seminario
Muela
Cruz
Tudemin
Campanario



in the river..... in Orihuela

Calculate and find out the title of one of Miguel Hernández poem

$3 - 2 = \mathbf{O}$

$5 - 2 = \mathbf{L}$

$5 + 3 = \mathbf{A}$

$7 - 5 = \mathbf{B}$

$3 + 1 = \mathbf{D}$

$1 + 5 = \mathbf{N}$

$2 + 3 = \mathbf{C}$

$4 + 3 = \mathbf{E}$

6 8 6 8 4 7 3 8

5 7 2 1 3 3 8

Ordered the letters

HRUCHC

OLC

U



Help Gabriela's goat
to poet's house

Someone

Can

Answer the question with the color code:

A M D G M E I B

and find out where each door leads

COSH
O _ _ _
RENITIVYUS
E _ _ _

What is the name of the woman to preside this door?

S A I I

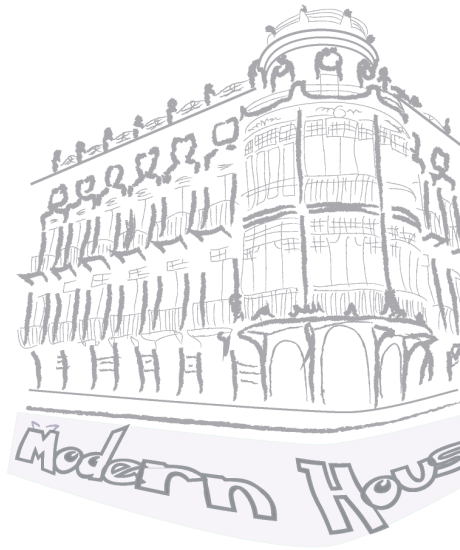
S U L

What is the name of this arc?



has messed Santo Domingo doors

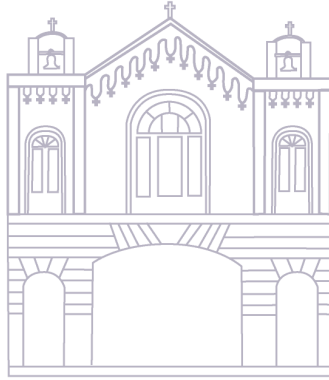
Would you put each one in its place?



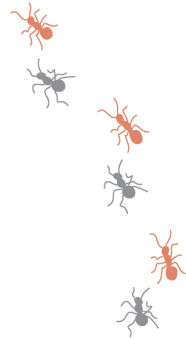
SANTA JUSTA



Complete the road, make and color your plan.



Hermitage



MY HOUSE



Find two identical butterflies



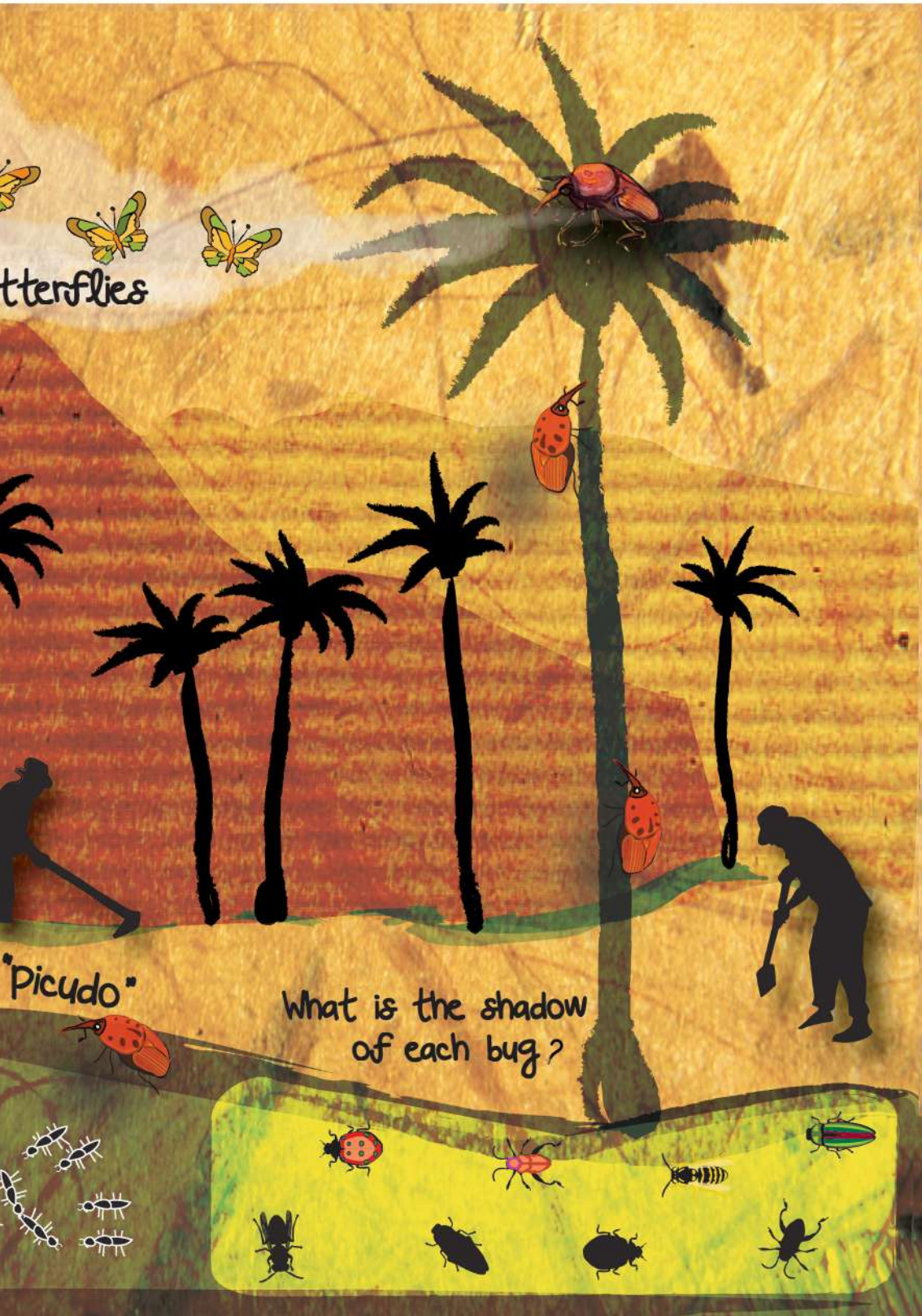
Find different



Help the ant to find its family:



Butterflies



"picudo"

What is the shadow
of each bug?



How many are there on the beach?

- Sandcastles
- Balls
- Starfish
- Parasols
- Cubes
- Fish
- Shipping



Order the pieces



CALETAICVHBBGG
 MOSCAPEJTIYLB
 RUBIOMSCRFAEF
 EHAQUAMARINAB
 GEBJSLCMPYNXA
 SGWFMDLPLWZTR
 GBCFCTHOEKEHR
 MGFSJOGAFCKNA
 CERRADAMELIMN
 PWCABOROIGADC
 ESTACALRRWNGO
 FLAMENCALXSJY
 BOSQUEJPTUWTC

Caleta
Mosca
Rubio
Glea
Aguamanina
Flamenca
Bosque
Cerrada
Estaca
Cabo Roig
Zenia
Barranco
Campoamor



Continuing the series:





EDUCATION

TOWN

COUNCIL

CONTINUE LEARNING AND
ENJOYING WITH YOUR FAMILY
AND YOUR SCHOOL IN OUR CITY!

WE OFFER:

BOOK SHOW



DIDACTIC ITINEBARY OF MIGUEL HERNANDEZ



FAMILY'S SUNDAYS



SCIENCE DIDACTIC MUSEUM



MUSIC



SCHOOL THEATRE SHOW





Orihuela
Educadora
CONCEJALÍA DE EDUCACIÓN



ORIHUELA
Historia del Mediterráneo

Excmo. Ayuntamiento
de Orihuela

